





HOW TO

WALK





At Syncope, we believe life is a rhythm, and every guest adds their unique improvisation to the melody. Inspired by the soul of jazz, our hotel is a sanctuary for artists who thrive on collaboration, creativity, and spontaneity.

Here, each space is designed to harmonize comfort and inspiration, allowing you to find your groove, whether you're composing a masterpiece, jamming with others, or simply enjoying the quiet between the beats.

Syncope is more than a hotel—it's a stage for your artistry, a pause in the chaos, and a celebration of life's perfect imperfections.

**improv above all**

**don't swing too hard  
after midnight**



The background is a solid yellow color. It features several decorative elements consisting of multiple thin, black, wavy lines that flow across the frame. One set of lines starts from the top left and curves towards the top right. Another set starts from the middle left and curves across the middle. A third set starts from the bottom right and curves towards the bottom left. These lines create a sense of movement and depth.

**keep an eye out for  
your instruments**

**smoking not allowed,  
except if it's a suit**

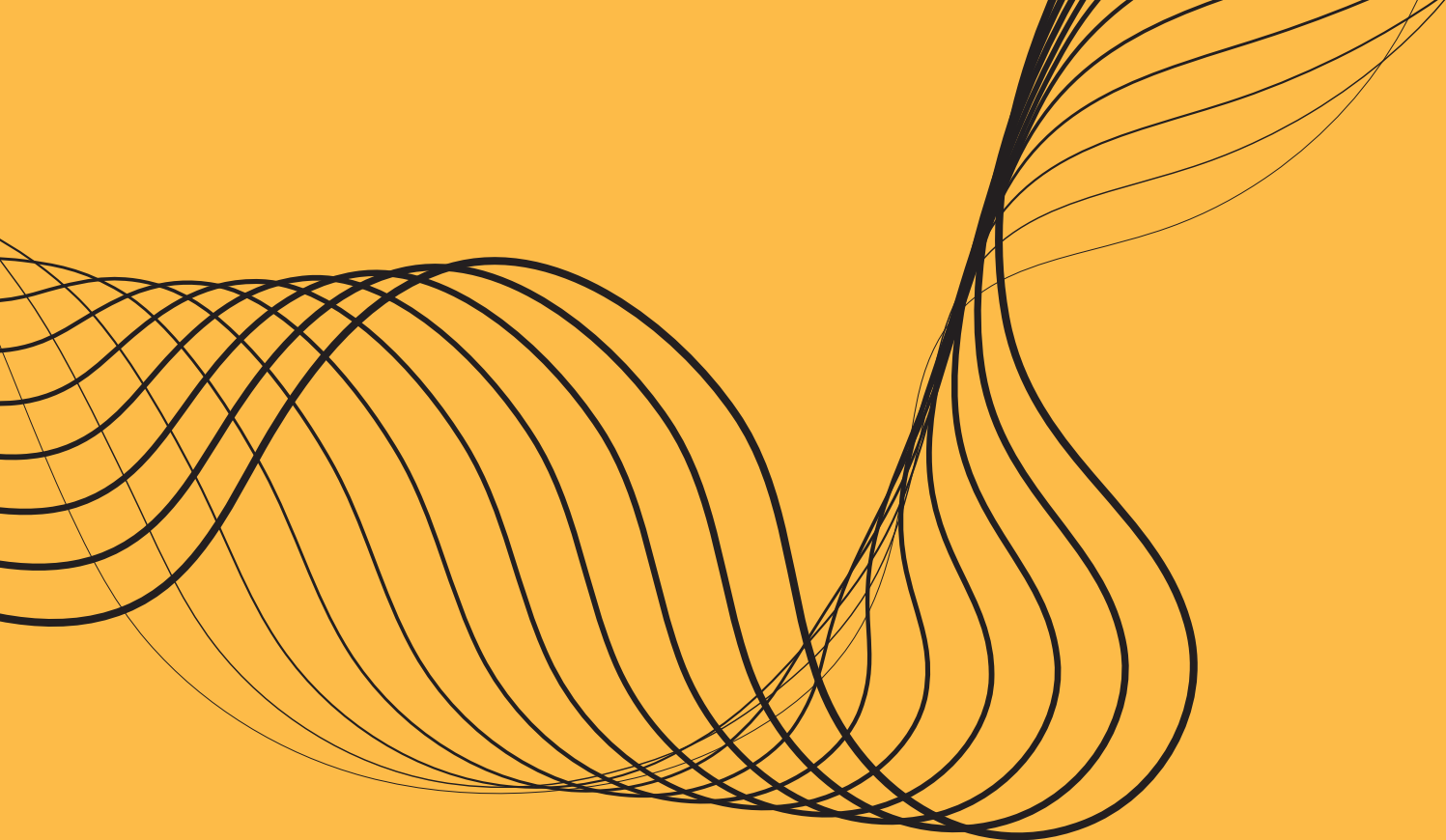


**only parties allowed on stage  
in the lobby**

**keep the rhythm when  
checking in & out**

The image features a solid yellow background. In the center, the text "be kind, everyone is a star" is written in a bold, black, sans-serif font. The text is framed by a decorative border composed of multiple thin, black, wavy lines that create a sense of movement and depth, resembling a stylized wave or a series of overlapping curves.

**be kind, everyone is a star**



SINCOPIE